

**KIEWIT DUFFERIN MIDTOWN PARTNERSHIP
HIGHWAY 417 FROM ISLAND PARK DRIVE TO KENT STREET
MTO CONTRACT NO. GC 2020-4075**



Notice of Construction:

Demolition of the 458 Catherine street building.
Areas of Bronson E-N/S Off ramp along Highway 417

Distribution Date: October 22nd, 2021

Kiewit Dufferin Midtown Partnership has been retained by the Ontario Ministry of Transportation to replace the Preston Street, Rochester Street, Booth Street, Bronson Avenue, and Percy Street bridges on Highway 417, the Ottawa Queensway, as well as undertake operational improvements from the O-Train bridges easterly to the Kent Street bridge and noise barrier replacements from Island Park Drive easterly to Kent Street.

To facilitate this work, KDMP will be required to implement traffic control staging on Highway 417 and City streets in the Areas of Bronson East – North/South Off ramp along Highway 417. This closure is to accommodate the demolition of 458 Catherine Street. Due to the scope of work being building demolition, please expect excess and potential disruptive noise within the below dates. KDMP would like to apologize in advance for any inconvenience. It is KDMPs intent to keep an open and upfront communication channel with all residents and affected agencies. To that end, please see the below information providing further details regarding road closures and the affected area.

WHEN:

Bronson E-N/S Off ramp along Highway 417

Anticipated Start Date: October 23th 2021 @ 06:00

Anticipated End Date: October 25th 2021 @ 06:00

WHY:

To facilitate the access for construction including but not limited to the Demolition of 458 Catherine street building.

WHERE:

Construction Activities will be taking place in the following locations:

• **Full Closures:**

○ **Bronson E-N/S Off ramp along Highway 417**

Anticipated Start Date: October 23rd 2021

Anticipated End Date: October 25th, 2021

WHAT:

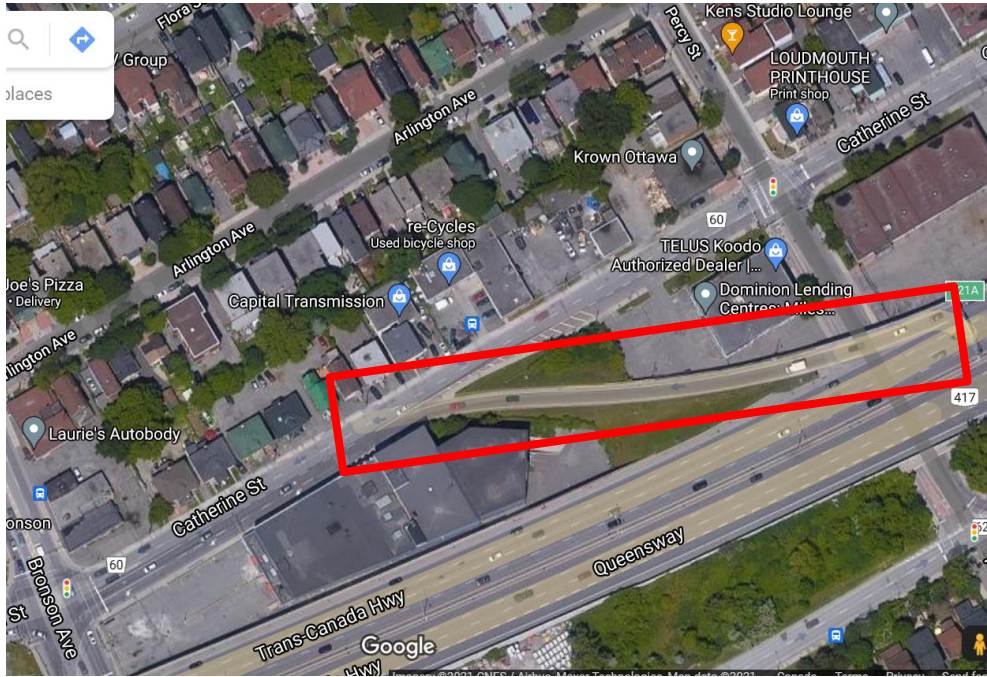
The closure scope includes but is not limited to:

Bronson E-N/S off ramp–

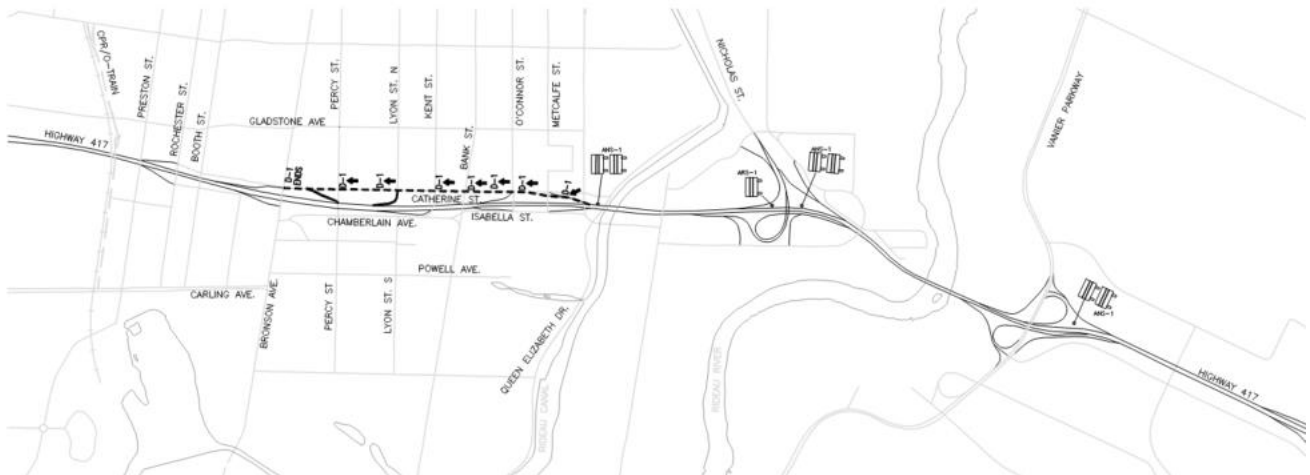
- Building Demolition of 458 Catherine Street
- Excavation
- See below figure 1.1 for closure area.
- See below figure 1.2 for detour route.

Figure 1.1

**KIEWIT DUFFERIN MIDTOWN PARTNERSHIP
HIGHWAY 417 FROM ISLAND PARK DRIVE TO KENT STREET
MTO CONTRACT NO. GC 2020-4075**



DETOUR:



CONTACT US

For any questions, please contact Francois Miljour, Project Superintendent at +1(613)-294-5982 or via email at francois.miljour@ca.crh.com.

Robert Cornell – Project Manager
Kiewit Dufferin Midtown Partnership