
NOTICE OF CONSTRUCTION START HIGHWAY 417 FULL CLOSURES – BOOTH STREET BRIDGE REPLACEMENT:

Closure of Hwy 417 eastbound and westbound lanes, Carling Ave eastbound on-ramp, Parkdale Ave eastbound on-ramp, O'Connor Street westbound on-ramp, Bronson Ave westbound on-ramp (will remain closed), Lyon Street westbound on-ramp (will remain closed), Rochester Street westbound on-ramp.

Distribution Date: June 6, 2022

Kiewit Dufferin Midtown Partnership (KDMP) has been retained by the Ontario Ministry of Transportation to replace the Booth Street bridge on Highway 417 / Ottawa Queensway. To facilitate this work, KDMP will be required to implement traffic control staging on Highway 417 and City streets. It is KDMP's intent to keep an open and upfront communication channel with all residents and affected agencies. To that end, please see the below information providing further details regarding road closures and the affected area.

WHEN: HWY 417 eastbound and westbound lanes - (Full Closure to all vehicular traffic – Follow Detour)

Anticipated Start Date: July 14, 2022 @ 8:00PM
Anticipated End Date: July 18, 2022 @ 6:00AM

HWY 417 eastbound on-ramps (Full Closure to all vehicular traffic – Follow Detour):

- **Carling Ave on-ramp**
- **Parkdale Ave on-ramp**

Anticipated Start Date: July 14, 2022 @ 8:00PM
Anticipated End Date: July 18, 2022 @ 6:00AM

HWY 417 westbound on-ramps (Full Closure to all vehicular traffic – Follow Detour):

- **O'Connor Street on-ramp**
- **Bronson Ave on-ramp (already closed)**
- **Lyon Street on-ramp (already closed)**
- **Rochester Street on-ramp**

Anticipated Start Date: July 14, 2022 @ 8:00PM
Anticipated End Date: July 18, 2022 @ 6:00AM

Booth Street from Normand Street to Arlington- (Full Closure to all vehicular traffic including cycling and pedestrians – Follow Detour)

Anticipated Start Date: July 6, 2022 @ 8:00PM
Anticipated End Date: July 27, 2022 @ 6:00AM

WHY: To facilitate the access for construction including but not limited to, replacement of the existing bridge on Highway 417 as well as repairs to the existing infrastructure and tie-in points.

WHERE: Construction Activities will be taking place in the following locations:

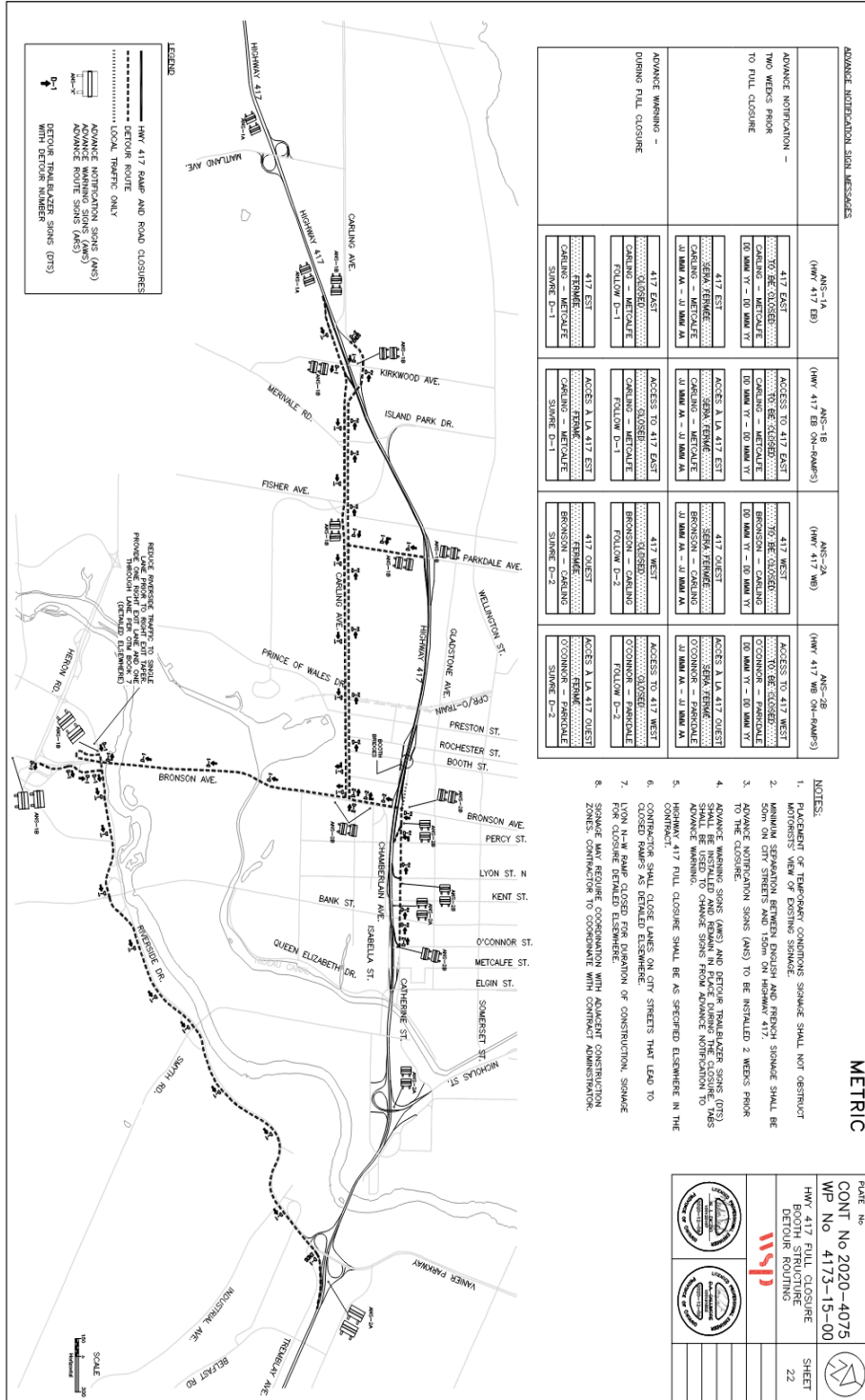
- HWY 417 eastbound lanes - Carling Ave to Kent Street
- HWY 417 westbound lanes - O'Connor Street to Rochester Street.

KIEWIT DUFFERIN MIDTOWN PARTNERSHIP HIGHWAY 417 FROM ISLAND PARK DRIVE TO KENT STREET MTO CONTRACT NO. GC 2020-4075



Closure Detour Map

All Detour maps are available on the following pages.



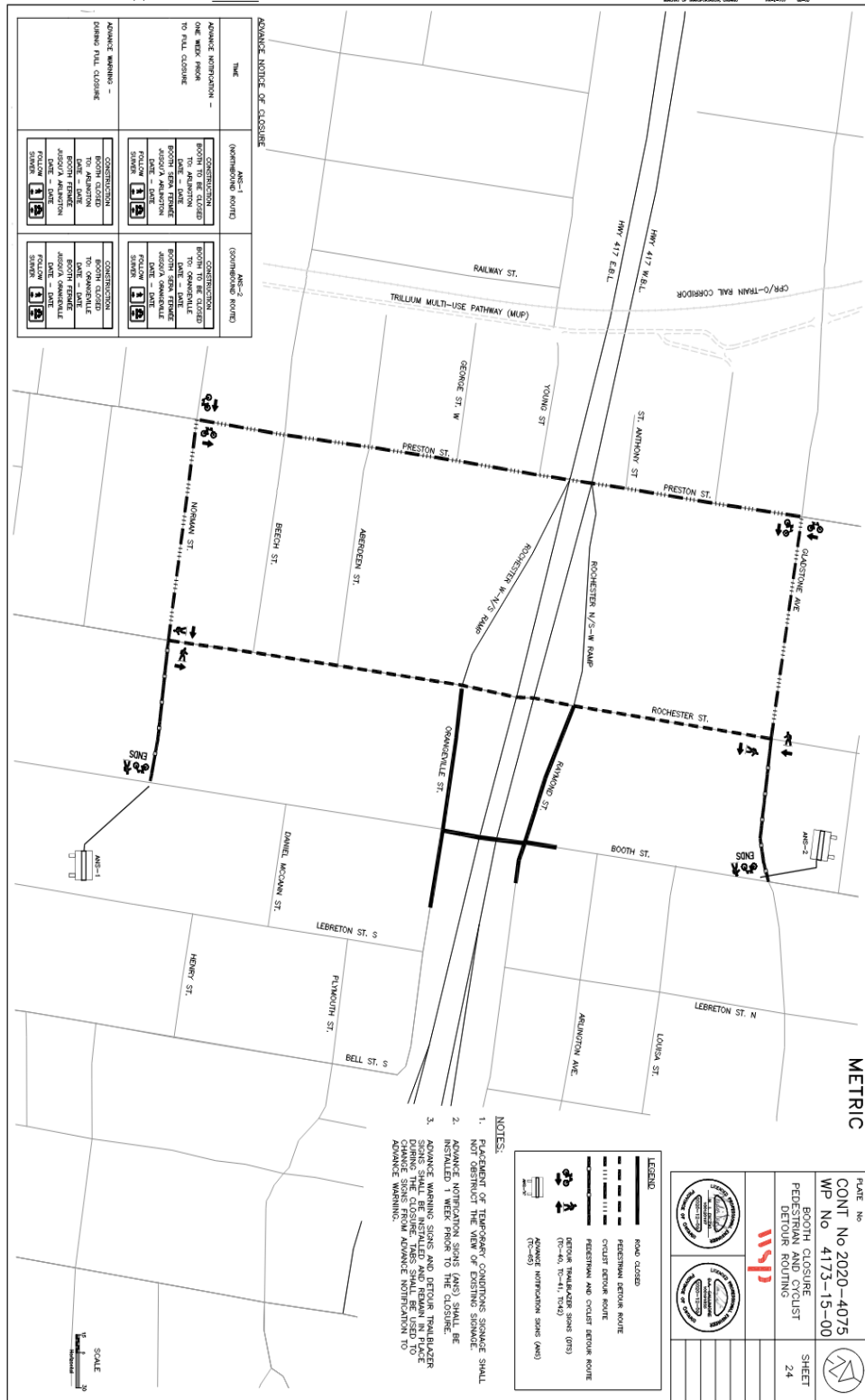
ADVANCE NOTIFICATION SIGN MESSAGES	ANS-1A (HWY 417 EB)	ANS-1B (HWY 417 WB SH-54/55)	ANS-2A (HWY 417 WB)	ANS-2B (HWY 417 WB SH-54/55)
ADVANCE NOTIFICATION - TWO WEEKS PRIOR TO FULL CLOSURE	417 EAST TO BE CLOSED CARLING - METCALFE 00 JAN VY - 00 JAN VY	ACCESS TO 417 EAST TO BE CLOSED CARLING - METCALFE 00 JAN VY - 00 JAN VY	417 WEST TO BE CLOSED ERIKSON - CARLING 00 JAN VY - 00 JAN VY	ACCESS TO 417 WEST TO BE CLOSED O'CONNOR - PARKDALE 00 JAN VY - 00 JAN VY
ADVANCE WARNING - DURING FULL CLOSURE	417 EAST CLOSED CARLING - METCALFE 00 JAN VY - 00 JAN VY	ACCESS TO 417 EAST CLOSED CARLING - METCALFE 00 JAN VY - 00 JAN VY	417 WEST CLOSED ERIKSON - CARLING 00 JAN VY - 00 JAN VY	ACCESS TO 417 WEST CLOSED O'CONNOR - PARKDALE 00 JAN VY - 00 JAN VY

- NOTES:**
1. PLACEMENT OF TEMPORARY CONDITIONS SIGNS SHALL NOT OBSTRUCT MOTORIST'S VIEW OF EXISTING SIGNS.
 2. MINIMUM SEPARATION BETWEEN ENGLISH AND FRENCH SIGNS SHALL BE 50M ON CITY STREETS AND 150M ON HIGHWAY 417.
 3. ADVANCE NOTIFICATION SIGNS (ANS) TO BE INSTALLED 2 WEEKS PRIOR TO THE CLOSURE.
 4. ADVANCE WARNING SIGNS (AWS) AND BEFORE TRAILBLAZER SIGNS (BTS) SHALL BE INSTALLED AND REMAIN IN PLACE DURING THE CLOSURE TO ADVISE TRAVELERS OF THE CLOSURE.
 5. HIGHWAY 417 FULL CLOSURE SHALL BE AS SPECIFIED ELSEWHERE IN THE CONTRACT.
 6. CONTRACTOR SHALL CLOSE LANES ON CITY STREETS THAT LEAD TO CLOSED RAMP AS REMAINED ELSEWHERE.
 7. LION N-W RAMP CLOSED FOR DURATION OF CONSTRUCTION, SIGNAGE SHALL BE AS REMAINED ELSEWHERE.
 8. CONTRACTOR TO COORDINATE WITH ADVISORY CONSTRUCTION ZONES, CONTRACTOR TO COORDINATE WITH CONTRACT ADMINISTRATION.

METRIC

PLATE No.
 CONT No 2020-4075
 HWY 417 FULL CLOSURE
 DETOUR ROUTING
 SHEET
 22

**KIEWIT DUFFERIN MIDTOWN PARTNERSHIP
HIGHWAY 417 FROM ISLAND PARK DRIVE TO KENT STREET
MTO CONTRACT NO. GC 2020-4075**



ADVANCE NOTICE OF CLOSURE

TYPE	ANS-1 (NON-BOUND ROUTE)	ANS-2 (BOUND ROUTE)
ADVANCE NOTIFICATION - ONE WEEK FROM TO FULL CLOSURE	CONSTRUCTION BOOTH TO BE CLOSED TO ALL TRAFFIC ROADWORK SIGN FOLLOWS ANS-1 (1) (2) (3)	CONSTRUCTION BOOTH TO BE CLOSED TO ALL TRAFFIC ROADWORK SIGN FOLLOWS ANS-2 (1) (2) (3)
ADVANCE WARNING - DURING FULL CLOSURE	CONSTRUCTION BOOTH CLOSED TO ALL TRAFFIC ROADWORK SIGN FOLLOWS ANS-1 (1) (2) (3)	CONSTRUCTION BOOTH CLOSED TO ALL TRAFFIC ROADWORK SIGN FOLLOWS ANS-2 (1) (2) (3)

- NOTES:**
1. PLACEMENT OF TEMPORARY CONSTRUCTION SIGNS SHALL NOT OBSTRUCT THE VIEW OF EXISTING SIGNS.
 2. ADVANCE NOTIFICATION SIGNS (ANS) SHALL BE INSTALLED 1 WEEK PRIOR TO THE CLOSURE.
 3. ADVANCE WARNING SIGNS AND DETOUR TRAFFICIZER SIGNS SHALL BE INSTALLED AND REMAIN IN PLACE UNTIL THE CLOSURE IS COMPLETED. CHANGES TO CHANGE SIGNS FROM ADVANCE NOTIFICATION TO ADVANCE WARNING.

LEGEND

	ROAD CLOSURE
	PEDESTRIAN DETOUR ROUTE
	CYCLIST DETOUR ROUTE
	PEDESTRIAN AND CYCLIST DETOUR ROUTE
	ADVANCE NOTIFICATION SIGN (ANS)
	ADVANCE WARNING SIGN (AWS)

METRIC

FILE NO: CONT No 2020-4075
WP No 4173-15-00

BOOTH CLOSURE
PEDESTRIAN AND CYCLIST
DETOUR ROUTING

msp

SHEET 24



**KIEWIT DUFFERIN MIDTOWN PARTNERSHIP
HIGHWAY 417 FROM ISLAND PARK DRIVE TO KENT STREET
MTO CONTRACT NO. GC 2020-4075**



CONTACT US

For any questions, please contact Francois Miljour, Project Superintendent at +1(613) 294 5982 or via email at KDMP-Info@kiewit.com.

Robert Cornell – Project Manager
Kiewit Dufferin Midtown Partnership