

---

**NOTICE OF CONSTRUCTION START HIGHWAY 417 FULL CLOSURES- ROCHESTER STREET BRIDGE  
REPLACEMENT:**

Closure of Highway 417 eastbound and westbound lanes, Carling Avenue eastbound on-ramp, Parkdale Avenue eastbound on-ramp, O'Connor Street westbound on-ramp, Bronson Street westbound on-ramp, Lyon Street westbound on-ramp (will remain closed), Rochester Street westbound on-ramp.

**Distribution Date: July 1, 2022**

Kiewit Dufferin Midtown Partnership (KDMP) has been retained by the Ontario Ministry of Transportation to replace the Rochester Street bridge on Highway 417 / Ottawa Queensway. To facilitate this work, KDMP will be required to implement traffic control staging on Highway 417 and City streets. It is KDMP's intent to keep an open and upfront communication channel with all residents and affected agencies. To that end, please see the below information providing further details regarding road closures and the affected area.

**WHEN: Highway 417 eastbound and westbound lanes- (Full closure to all vehicular traffic – Follow Detour):**

Anticipated Start Date: August 11, 2022 @ 8:00PM  
Anticipated End Date: August 15, 2022 @ 6:00AM

**Highway 417 eastbound on-ramps (Full closure to all vehicular traffic – Follow Detour):**

- **Carling Ave on-ramp**
- **Parkdale Ave on-ramp**

Anticipated Start Date: August 11, 2022 @ 8:00PM  
Anticipated End Date: August 15, 2022 @ 6:00AM

**Highway 417 westbound on-ramps (Full closure to all vehicular traffic – Follow Detour):**

- **O'Connor Street on-ramp**
- **Bronson Street on-ramp**
- **Lyon Street on-ramp (already closed)**
- **Rochester Street on-ramp**

Anticipated Start Date: August 11, 2022 @ 8:00PM  
Anticipated End Date: August 15, 2022 @ 6:00AM

**Rochester Street from Beach Street to Gladstone Avenue - (Full closure to all vehicular traffic – Follow Detour):**

Anticipated Start Date: August 11, 2022 @ 8:00PM  
Anticipated End Date: August 15, 2022 @ 6:00AM

**WHY:** To facilitate the access for construction including but not limited to, replacement of the existing bridge on Highway 417 as well as repairs to the existing infrastructure and tie-in points.

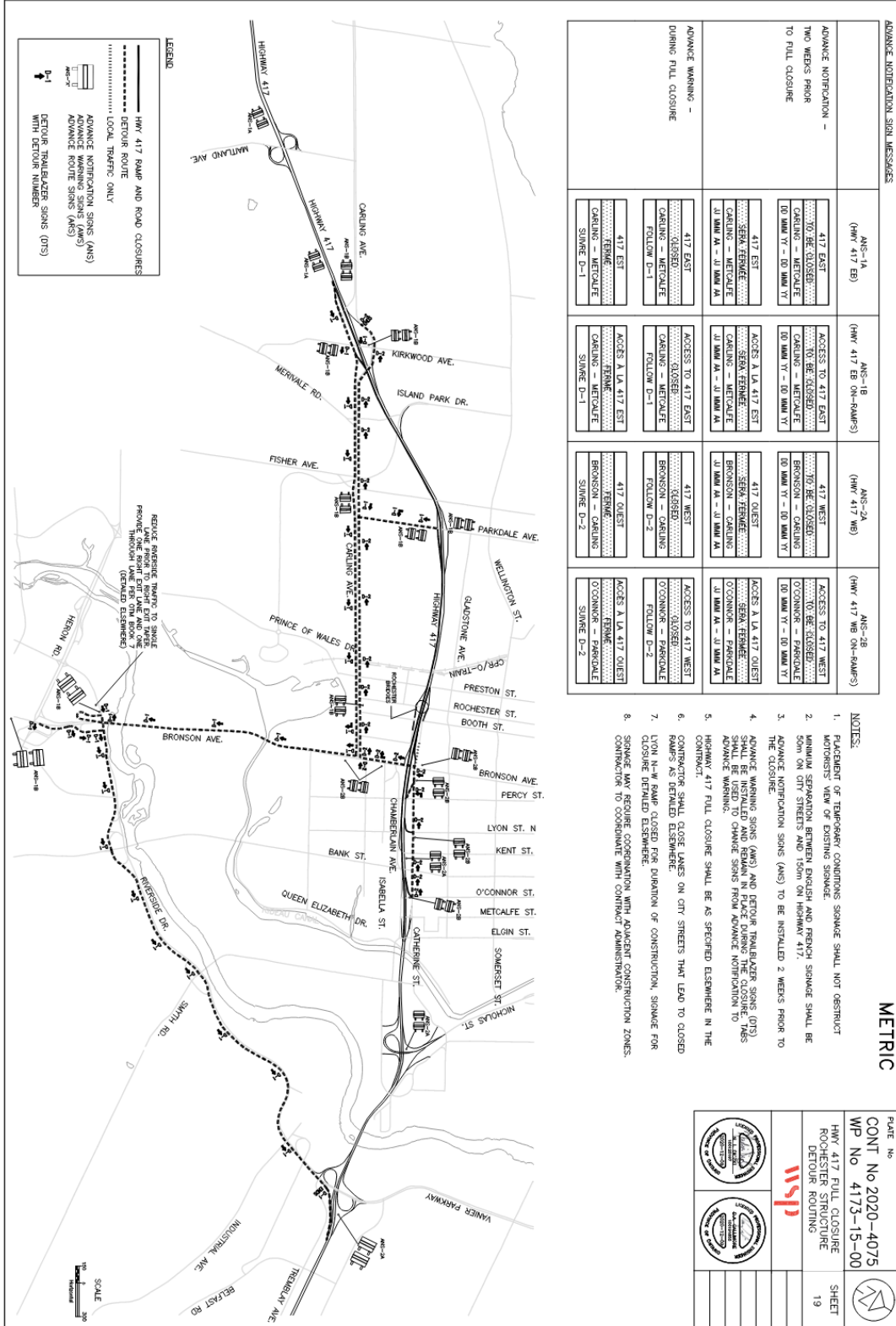
**WHERE:** Construction activities will be taking place in the following locations:

- Highway 417 eastbound - Carling Ave to Kent Street
- Highway 417 westbound - O'Connor Street to Rochester Street.

**KIEWIT DUFFERIN MIDTOWN PARTNERSHIP  
HIGHWAY 417 FROM ISLAND PARK DRIVE TO KENT STREET  
MTO CONTRACT NO. GC 2020-4075**



**Closure Detour Map**



**ADVANCE NOTIFICATION SIGN MESSAGES**

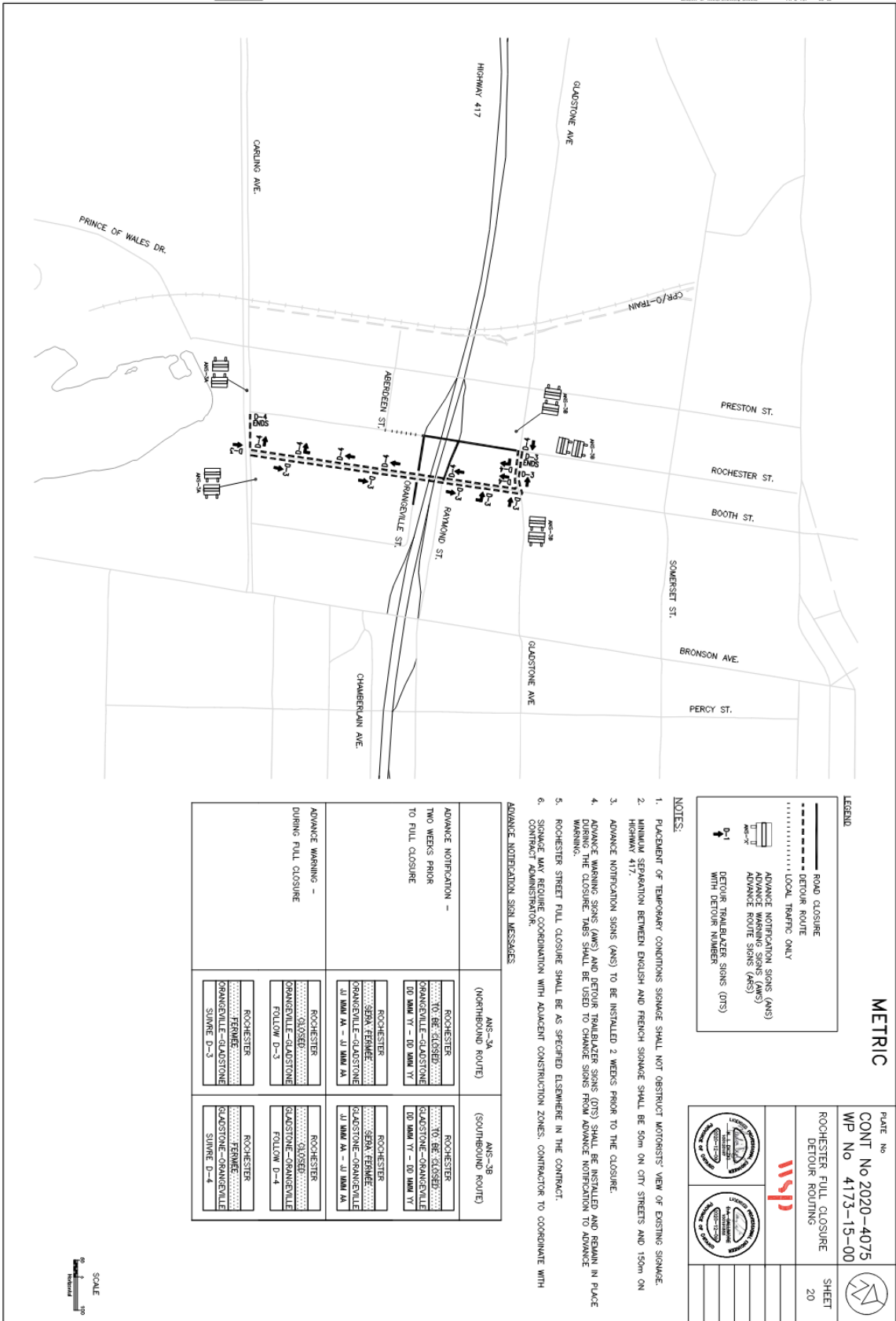
	ANS-1A (HWY 417 EB)	ANS-1B (HWY 417 EB ON-RAMP)	ANS-2A (HWY 417 WB)	ANS-2B (HWY 417 WB ON-RAMP)
ADVANCE NOTIFICATION - TWO WEEKS PRIOR TO FULL CLOSURE	417 EAST TO BE CLOSED CARLINS - METCALFE 00 00AM TT - 00 00AM TT	ACCESS TO 417 EAST TO BE CLOSED CARLINS - METCALFE 00 00AM TT - 00 00AM TT	417 WEST TO BE CLOSED BRONSON - CARLINS 00 00AM TT - 00 00AM TT	ACCESS TO 417 WEST TO BE CLOSED O'CONNOR - PARKDALE 00 00AM TT - 00 00AM TT
ADVANCE WARNING - DURING FULL CLOSURE	417 EAST FOLLOW D-1	ACCESS TO 417 EAST FOLLOW D-1	417 WEST FOLLOW D-2	ACCESS TO 417 WEST FOLLOW D-2

- NOTES:**
- PLACEMENT OF TEMPORARY CONDITIONS SIGNAGE SHALL NOT OBSTRUCT MOTORIST'S VIEW OF EXISTING SIGNAGE.
  - MINIMUM SEPARATION BETWEEN ENGLISH AND FRENCH SIGNAGE SHALL BE 50m ON CITY STREETS AND 150m ON HIGHWAY 417.
  - ADVANCE NOTIFICATION SIGNS (ANS) TO BE INSTALLED 2 WEEKS PRIOR TO THE CLOSURE.
  - ADVANCE WARNING SIGNS (AWS) AND DETOUR TRAILBLAZER SIGNS (DTS) SHALL BE INSTALLED AND REMAIN IN PLACE THROUGHOUT THE CLOSURE. ADVANCE ROUTE SIGNS (ARS) SHALL BE INSTALLED 19 WEEKS PRIOR TO THE CLOSURE.
  - HIGHWAY 417 FULL CLOSURE SHALL BE AS SPECIFIED ELSEWHERE IN THE CONTRACT.
  - CONTRACTOR SHALL CLOSE LANES ON CITY STREETS THAT LEAD TO CLOSED RAMPS AS DETAILED ELSEWHERE.
  - LYON N-W RAMP CLOSED FOR DURATION OF CONSTRUCTION, SIGNAGE FOR CLOSURE DETAILED ELSEWHERE.
  - SIGNAGE MAY REQUIRE COORDINATION WITH ADJACENT CONSTRUCTION ZONES. CONTRACTOR TO COORDINATE WITH CONTRACT ADMINISTRATOR.

**METRIC**

DATE No	CONTRACT No	SHEET
WP No	4173-15-00	19

**KIEWIT DUFFERIN MIDTOWN PARTNERSHIP  
HIGHWAY 417 FROM ISLAND PARK DRIVE TO KENT STREET  
MTO CONTRACT NO. GC 2020-4075**



- LEGEND**
- ROAD CLOSURE
  - DETOUR ROUTE
  - LOCAL TRAFFIC ONLY
  - ADVANCE NOTIFICATION SIGNS (ANS)
  - ADVANCE WARNING SIGNS (AWS)
  - ADVANCE ROUTE SIGNS (ARS)
  - DETOUR TRAILBLAZER SIGNS (DTS) WITH DETOUR NUMBER

**METRIC**

PLATE No  
CONT No 2020-4075  
WP No 4173-15-00

ROCHESTER FULL CLOSURE  
DETOUR ROUTING

**isp**

SHEET 20

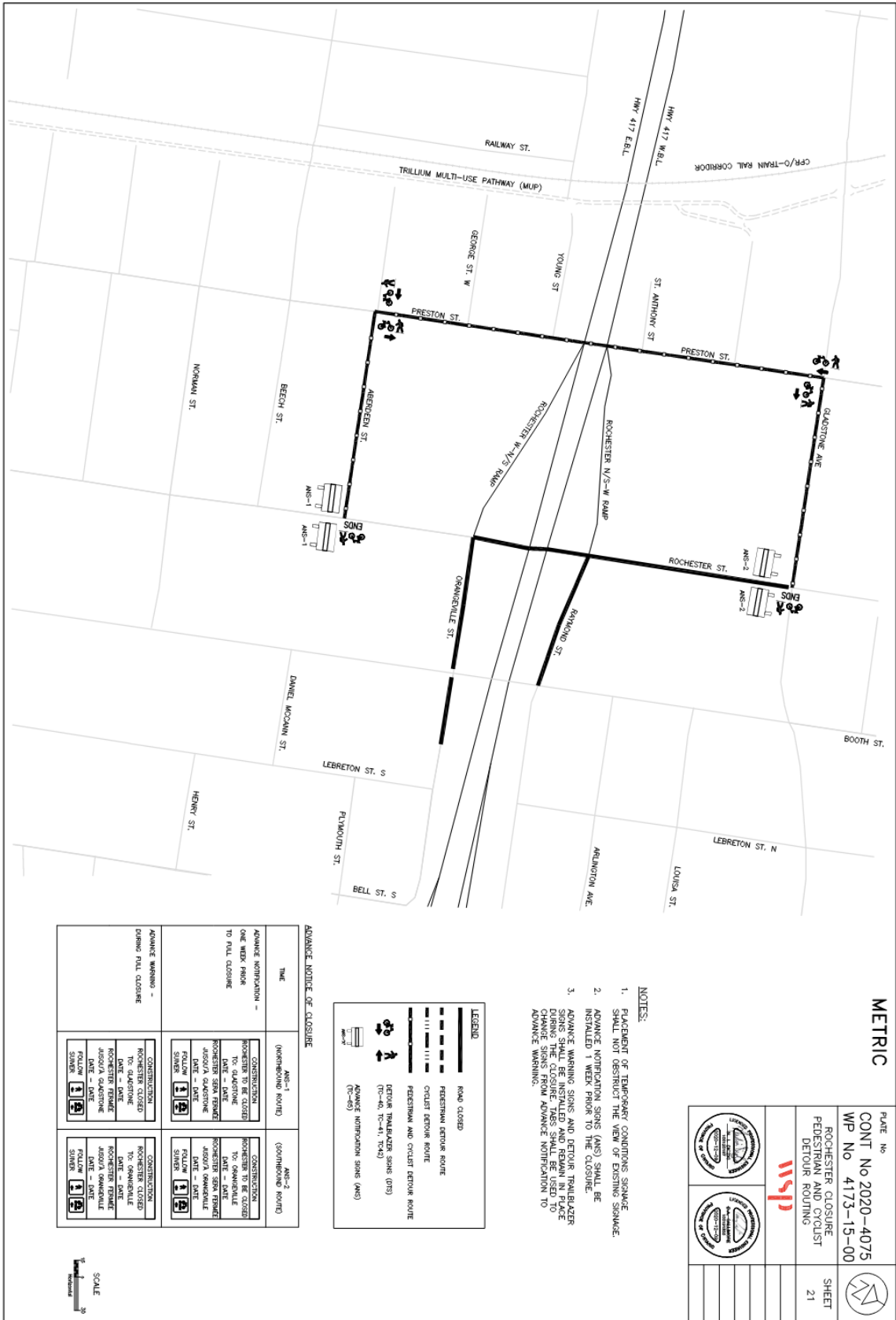
- NOTES:**
1. PLACEMENT OF TEMPORARY CONDITIONS SIGNAGE SHALL NOT OBSTRUCT MOTORISTS' VIEW OF EXISTING SIGNAGE.
  2. MINIMUM SEPARATION BETWEEN ENGLISH AND FRENCH SIGNAGE SHALL BE 50m ON CITY STREETS AND 150m ON HIGHWAY 417.
  3. ADVANCE NOTIFICATION SIGNS (ANS) TO BE INSTALLED 2 WEEKS PRIOR TO THE CLOSURE.
  4. ADVANCE WARNING SIGNS (AWS) AND DETOUR TRAILBLAZER SIGNS (DTS) SHALL BE INSTALLED AND REMAIN IN PLACE THROUGHOUT THE CLOSURE. THIS SHALL BE USED TO CHANGE SIGNS FROM ADVANCE NOTIFICATION TO ADVANCE WARNING.
  5. ROCHESTER STREET FULL CLOSURE SHALL BE AS SPECIFIED ELSEWHERE IN THE CONTRACT.
  6. SIGNAGE MAY REQUIRE COORDINATION WITH ADJACENT CONSTRUCTION ZONES. CONTRACTOR TO COORDINATE WITH CONTRACT ADMINISTRATOR.

**ADVANCE NOTIFICATION SIGN MESSAGES**

	ANS-3A (NORTHERN ROUTE)	ANS-3B (SOUTHERN ROUTE)
ADVANCE NOTIFICATION - TWO WEEKS PRIOR TO FULL CLOSURE	ROCHESTER TO BE CLOSED ORANGEVILLE-GLASTONE RD SIGN T1 - 03 MINS T1	ROCHESTER TO BE CLOSED GLASTONE-ORANGEVILLE RD SIGN T1 - 03 MINS T1
	ROCHESTER SERV. FERMEE ORANGEVILLE-GLASTONE JI MAN 1A - JI MAN 1A	ROCHESTER SERV. FERMEE GLASTONE-ORANGEVILLE JI MAN 1A - JI MAN 1A
ADVANCE WARNING - DURING FULL CLOSURE	ROCHESTER FERMEE ORANGEVILLE-GLASTONE SIGN D-3	ROCHESTER FERMEE GLASTONE-ORANGEVILLE SIGN D-4

SCALE  
1:1000

**KIEWIT DUFFERIN MIDTOWN PARTNERSHIP  
HIGHWAY 417 FROM ISLAND PARK DRIVE TO KENT STREET  
MTO CONTRACT NO. GC 2020-4075**



**METRIC**

	PLATE No <b>CONT No 2020-4075</b> WP No 4173-15-00	
	ROCHESTER CLOSURE PEDESTRIAN AND CYCLIST DETOUR ROUTING	SHEET 21

- NOTES:**
1. PLACEMENT OF TEMPORARY CONDITIONS SIGNS SHALL NOT OBSTRUCT THE VIEW OF EXISTING SIGNS.
  2. ADVANCE NOTIFICATION SIGNS (ANS) SHALL BE INSTALLED 1 WEEK PRIOR TO THE CLOSURE.
  3. ADVANCE WARNING SIGNS AND DETOUR TRAILBLAZER SIGNS SHALL BE INSTALLED PRIOR TO THE CLOSURE. DURING THE CLOSURE, THESE SIGNS SHALL BE CHANGED TO CHANGE SIGNS FROM ADVANCE NOTIFICATION TO ADVANCE WARNING.

**LEGEND**

	ROAD CLOSED
	PEDESTRIAN DETOUR ROUTE
	CYCLIST DETOUR ROUTE
	PEDESTRIAN AND CYCLIST DETOUR ROUTE
	DETOUR TRAILBLAZER SIGNS (DTS) (TC-60, TC-41, TC-4)
	ADVANCE NOTIFICATION SIGNS (ANS) (TC-40)

**ADVANCE NOTICE OF CLOSURE**

TIME	ANS-1 (ON-ROAD ROUTE)	ANS-2 (CONVICTION ROUTE)
<b>ADVANCE NOTIFICATION - ONE WEEK PRIOR TO FULL CLOSURE</b>  ADVANCE WARNING - DURING FULL CLOSURE	CONSTRUCTION ROCHESTER TO BE CLOSED DATE - DATE ROCHESTER SEAN TERNAND JESSICA QUASTONE FLYING SWIRL	CONSTRUCTION ROCHESTER TO BE CLOSED DATE - DATE ROCHESTER SEAN TERNAND JESSICA QUASTONE FLYING SWIRL
	CONSTRUCTION CLOSED TO QUASTONE ROCHESTER FERNANDE JESSICA QUASTONE DATE - DATE	CONSTRUCTION CLOSED TO QUASTONE ROCHESTER FERNANDE JESSICA QUASTONE DATE - DATE

SCALE

**KIEWIT DUFFERIN MIDTOWN PARTNERSHIP  
HIGHWAY 417 FROM ISLAND PARK DRIVE TO KENT STREET  
MTO CONTRACT NO. GC 2020-4075**

---



**CONTACT US**

For any questions, please contact Francois Miljour, Project Superintendent at +1(613) 294 5982 or via email at [KDMP-Info@kiewit.com](mailto:KDMP-Info@kiewit.com).

---

**Robert Cornell – Project Manager**  
Kiewit Dufferin Midtown Partnership